



# Glenbervie School Newsletter

Glenbervie School, 151 Ngunguru Road, R.D. 3, Whangarei 0173

Phone: (64) 09 437 5812, Fax: (64) 09 437 0296

Email: [office@glenbervie.school.nz](mailto:office@glenbervie.school.nz)



Pathways to Excellence

Newsletter 05/2017

2 March 2017

*Nga Mihi nui ki a koutou/Greetings to you all.*



**Welcome** to our new entrants Addison and Finn in Room 1. We know you will enjoy your time at Glenbervie School.



**Principal Awards:** The following students received Principal Awards at the last weeks assembly:

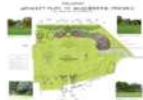


*Samantha and Finn in*

*Room 1, Noah and Harper in Room 2, Leah and Olivia in Room 3, Poppy and Asher in Room 4, Nikau, Dayton and Kate in Room 6, Helena and Lincoln in Room 7, Mia and Jade in Room 8, Carmelo and Danika in Room 9, Demetrius and Holly in Room 10 and Connor R and Waiora in Room 12*



A reminder all schools are dog-free areas as outlined in the Health and Safety Act. Please do not bring dogs onto the school grounds.



### Calling all Hands for Active Play Space Project:

We need people to help sort rocks and rip up wooden bark edging so that play areas can be re-edged with rocks and re filled with fresh bark. Work hours can be flexible - including school hours. If you drop children off in the morning or pick them up in the afternoon, please consider donating half an hour of your time? You will need to wear work clothes, sturdy foot wear and gloves. Please phone the office or contact Mrs Hayman or Mr Tattersfield with offers of support. Thank you.

**Lunchonline:** Our school lunches can be ordered using Lunchonline. This is an online service where parents/caregivers set up their own account, order lunch and pay online. The lunch is then delivered to school in time for our lunch break. Our Food Provider offers healthy choices along with some treat options. So to view the menu or to set up an account and/or place an order, just click on the website:



**Construction:** Our construction area is a hive of activity. Progress is on track for a completion date at the end of April. Please be vigilant around the work area and follow directions and notices of areas that are out-of-bounds.



### New LEGO Batman Movie – School Fundraiser

The PTA are holding a movie screening at Event Cinemas for the new LEGO Batman Movie on Wednesday, 12 April at 6pm (the day before end of term and Easter).

Treat yourself and your kids to this new blockbuster movie and support the school at the same time. \$15 per person including a small popcorn. Movie snacks available on the night (bring coins).

Tickets need to be pre purchased and will sell fast! Tickets can be purchased from the School Office or via electronic bank payment to Glenbervie School PTA, with movie and your name as a reference, thanks!  
ASB Whangarei, 12 3093 0149747 00



### The Great Glenbervie Garage Sale

The date is set for Saturday, 18<sup>th</sup> March, 7am start.

Please deliver any donated items to the school hall from Monday, 13<sup>th</sup> March. Items must be in good condition. No electronics please. Share the news with family and friends and start collecting. If you are available to help sort and organise on the afternoon of Friday 17<sup>th</sup>, or help on a sale table on the day, please email: [office@glenbervie.school.nz](mailto:office@glenbervie.school.nz).

**ICAS  
2017**

### ICAS- Student from Yr3 – Yr6:

If you would like your child to sit ICAS Exams this year, please complete the permission slip and return it, with payment to

Mrs Shirley in Room 3 no later than 15<sup>th</sup> March.  
**PLEASE NOTE - LATE ENTRIES WILL NOT BE ACCEPTED.**

## GlenberBee Honey:

This yummy honey is available from the School Office, 500gm for \$10.00.



**School Donation & Copy Fee:** Thank you to all those who paid their school donation and copy fee with the stationery order. The donation enables the school to support the curriculum programmes through purchasing resources and equipment. If you didn't pay your donation and copy fee with the stationery, you are able to pay through the office, or you can pay online to Glenberbie School Board of Trustees 03 0498 0227455 00.

1st Child	\$80.00	(\$20.00 per term)
2nd Child	\$65.00	(\$16.50 per term)
Max Donation	\$145.00	(\$36.50 per term)

Copy Fee per child \$10 per annum.

**Parent & Teacher School Calendar App**  
**Glenberbie School**

- Download our school calendar app free.
- Never again miss out on one of our many great school events.
- Event dates and reminders updates in real time.

i If you have already downloaded the calendar app remember to refresh as we are always updating with important school information.

Scan the QR Code relevant to your device OR Search for "The Parent Teacher Calendar"

## Bay of Islands Sanitarium Weet-Bix Kids TRYathlon

Event Date: Sunday 2<sup>nd</sup> April 2017  
Event Location: Waitangi Treaty Grounds



Be part of the Team! Register now for the Weet-Bix kids Tryathlon and join the Glenberbie School team.

Follow this link to enter:

<https://registration.tryathlon.co.nz/Home/Event/15/Package/0/Wave/0/Sequence/0/School/a5a2963-7497-4403-85ae-12ee232111d0>

Email Mr Tattersfield for further information: olivert@glenberbie.school.nz



## Glenberbie School Values

### RRIPS

*Respect, Resilience, Integrity, Perseverance and Self-Discipline.*

Our current school-wide focus on values is:

**Resilience.**

**Respect** continues throughout the year as a focus school-wide.

### Dates to Remember:

March	
Tue 7 <sup>th</sup>	WPSSA Swimming Comp - Seniors
Mon 20 <sup>th</sup>	Senior Camp
Thu 30 <sup>th</sup>	School Photos
April	
Tue 4 <sup>th</sup>	BOT Meeting
Fri 7 <sup>th</sup>	End of Term Assembly
Thu 13 <sup>th</sup>	End of Term 1

You should never regret anything in life. If it's good, it's wonderful. If it's bad it's experience.

Kind Regards  
Braden Eades  
Principal



# Glenbervie School Newsletter

Glenbervie School, 151 Ngunguru Road, R.D. 3, Whangarei 0173

Phone: (64) 09 437 5812, Fax: (64) 09 437 0296

Email: [office@glenbervie.school.nz](mailto:office@glenbervie.school.nz)



Pathways to Excellence

Newsletter 05/2017

2 March 2017



## ICAS Exams 2017

In the past we have offered these external exams to interested families.

If you would like your child to participate, please complete the permission slip and return it, with payment to Mrs Shirley in Room 3 no later than 15<sup>th</sup> March. PLEASE NOTE- LATE ENTRIES WILL NOT BE ACCEPTED. If you would like more information on the exams go their official website [www.eaa.unsw.edu.au](http://www.eaa.unsw.edu.au)

## 2017 ICAS Permission Form

Please return this form with your payment, to your school no later than [date]

I give permission for my child, \_\_\_\_\_ of \_\_\_\_\_  
*Child's name* *Class*

to participate in the following 2017 ICAS assessments.

Please select the subjects you would like your child to participate in:

Subject/Paper	School Year	Official Sitting Date	Participation Fee (incl. GST)	Fee Enclosed
Science	3-6	30 May 2017	\$9.50	
Writing	4-6	12-16 June 2017	\$20.50	
Spelling	3-6	14 June 2017	\$11.50	
English	3-6	1 August 2017	\$9.50	
Mathematics	3-6	15 August 2017	\$9.50	
<b>TOTAL</b>				

Students must sit on the official sitting date for each subject to be eligible for UNSW medals.

Please \_\_\_\_\_ find enclosed for payment of the total fee.  
*Amount*

\_\_\_\_\_  
Name of Parent/Guardian

\_\_\_\_\_  
Date

\_\_\_\_\_  
Signature of Parent/Guardian



© ICAS is a product of UNSW Global Pty Limited, a world leader in the provision of education, assessment and expertise services and a wholly owned enterprise of UNSW Australia. UNSW Global Pty Limited ABN 62 886 416 962.