

*Nga Mihi nui ki a koutou/Greetings to you all.*

**Water Tank/Pump** Thank you to Gary Hoare, (Mr Hoare's dad) for the donation of water tanks for our Active Play Space. These tanks will form part of the interactive water play aspect.



There is a lot of sickness currently going around school. If your child is unwell please keep him/her home. By sending a sick child to school often means that the whole class is at risk.

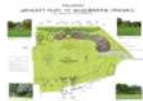
**PTA AGM:** The PTA will be holding their AGM and meeting on Monday, 27<sup>th</sup> March at 7pm in the school staffroom. Everyone is welcome to attend.



**WPSSA Swimming Event:** Well done to all of the swimmers who took part in the annual Whangarei Primary School Sports Association Swimming Event at Whangarei Intermediate last week. We are proud to have such

talented students at our school. Many of the students placed in their heats and a few came very close to the top 3 spots overall. Unfortunately due to the stormy weather on the day the school relays did not take place. Thank you to all of the parents who helped support our swimming days this year.

**School Reading Book/Journal Amnesty:** We are missing quite a few of our Reading Books that the junior and middle school take home. These books/journals are very expensive to replace and are used in class daily. It is frustrating for the teachers if there are not enough books to go around. Please check your child's/ren's room and return these books to the school office.



**Calling all Hands for Active Play Space Project:**

We need people to help sort rocks and rip up wooden bark edging so that play areas can be re-edged with rocks and re-filled with fresh bark. Work hours can be flexible - including school hours. If you drop children off in the morning or pick them up in the afternoon, please consider donating half an hour of your time. You will need to wear work clothes, sturdy foot wear and gloves. Please phone the office or contact Mrs Hayman or Mr Tattersfield with offers of support. Thank you.



**The Great Glenbervie Garage Sale**  
The date is set for Saturday, 18<sup>th</sup> March, 7am start.

Please deliver any donated items to the school hall from Monday, 13<sup>th</sup> March. Items must be in good condition. No electronics please. Share the news with family and friends and start collecting.

**URGENT call for helpers on the day:** We currently have only 4 confirmed parent helpers for Saturday morning. **HELP!!** We urgently need your help to run the garage sale. If you are able to assist please confirm ASAP. The time required would be between 6.45 and 11ish. All the money raised is going directly to the building of the Active Playspace for your children. Please email or text to [flee@ihug.co.nz](mailto:flee@ihug.co.nz) or 021 503775.



**School Photos:** On 30 March 2017, Liz Davies Photography will be at school. Please put this date in your diaries. An order form has been sent home today. One per family.

**LEGO Batman Movie – PTA School Fundraiser:** Tickets are selling FAST for the LEGO BATMAN MOVIE being screened on Wednesday, 12<sup>th</sup> April, 6pm at Event Cinemas, Whangarei.

- Tickets \$15, includes popcorn
- Buy from school office, or
- Put money into Glenbervie School PTA, bank account with your name and room number reference, 12 3093 0149747 00
- Tickets will be issued – if you've already paid you will receive tickets shortly.



**School Contact Details**

- PT Calendar App.
- Email, [office@glenbervie.school.nz](mailto:office@glenbervie.school.nz)
- Text, 021 1284557
- Phone, 4375812

If your child is absent, please advise of **Student Name, Room No** and **Reason For Absence**.



**Pokemon Cards:**

Unfortunately, due to a number of serious incidents we are no longer allowing children to bring Pokemon Cards to school.

**Found:** Prescription sunglasses (Oakley) left in the Hall with the Garage Sale items. Please collect from the school office.

**GlenberBee Honey:** This yummy honey is available from the School Office, 500gm for \$10.00.



## Bay of Islands Sanitarium Weet-Bix Kids TRYathlon

Event Date: Sunday 2<sup>nd</sup> April 2017  
Event Location: Waitangi Treaty Grounds



Be part of the Team! Register now for the Weet-Bix kids Tryathlon and join the Glenberbie School team.

Follow this link to enter:

<https://registration.tryathlon.co.nz/Home/Event/15/Package/0/Wave/0/Sequence/0/School/a15a2963-7497-4403-85ae-12eea32111d0>

Email Mr Tattersfield for further information: olivert@glenberbie.school.nz



## SCHOLASTIC

The next Scholastic Book Brochure went home this week. Please have orders at school by Friday, 24<sup>th</sup> March.

INTRODUCING  
**SCHOLASTIC**  
**Book Clubs LOOP**  
for Parents

The NEW Scholastic Book Clubs asked, where are you reading & answer platform for Parents who wish to pay for their child's Book Club order by CREDIT CARD. [CLICK HERE TO ORDER NOW!](#)

**CHILLY TUESDAY**

The Middle Team will be selling Ice-Blocks for \$1 at lunchtime on Tuesdays.

### Glenberbie School Values RRIPS

*Respect, Resilience, Integrity, Perseverance and Self-Discipline.*

Our current school-wide focus on values is:

**Resilience.**

**Respect** continues throughout the year as a focus school-wide.

**School Donation & Copy Fee:** Thank you to all those who paid their school donation and copy fee with the stationery order. The donation enables the school to support the curriculum programmes through purchasing resources and equipment. If you didn't pay your donation and copy fee with the stationery, you are able to pay through the office, or you can pay online to Glenberbie School Board of Trustees **03 0498 0227455 00.**

1st Child \$80.00 (\$20.00 per term)  
2nd Child \$65.00 (\$16.50 per term)  
Max Donation \$145.00 (\$36.50 per term)  
**Plus** a Copy Fee per child \$10 per annum.

### Dates to Remember:

March	
13 <sup>th</sup> -17 <sup>th</sup>	Drop Off in Hall for Garage Sale Items
Sat 18 <sup>th</sup>	Garage Sale, 7am
Mon 20 <sup>th</sup>	Senior Camp – Rm's 8 & 11
Wed 22 <sup>nd</sup>	Senior Camp – Rm's 9 & 10
Mon 27 <sup>th</sup>	PTA AGM, 7pm Staffroom
Thu 30 <sup>th</sup>	School Photos
April	
Tue 4 <sup>th</sup>	BOT Meeting
Fri 7 <sup>th</sup>	End of Term Assembly
Thu 13 <sup>th</sup>	End of Term 1
Fri 14 <sup>th</sup>	Good Friday – School Closed

**Parent & Teacher School Calendar App  
Glenberbie School**

- Download our school calendar app free.
- Never again miss out on one of our many great school events.
- Event dates and reminders updates in real time.

*i* If you have already downloaded the calendar app remember to refresh as we are always updating with important school information.

Scan the QR Code relevant to your device OR Search for "The Parent Teacher Calendar"

**I can accept failure,  
everyone fails at something.  
But I cannot accept not trying.**

*Michael Jordan*

Kind Regards  
Braden Eades  
Principal



# Glenbervie School Newsletter

Glenbervie School, 151 Ngunguru Road, R.D. 3, Whangarei 0173

Phone: (64) 09 437 5812, Fax: (64) 09 437 0296

Email: [office@glenbervie.school.nz](mailto:office@glenbervie.school.nz)



Pathways to Excellence

Newsletter 07/2017

16 March 2017

## 2017 Glenbervie Hockey Registration

If your child is interested in playing hockey this winter for Glenbervie School, please complete the form below and return to school office. Games are always played at Kensington Park turf. We will be having a rally in a few weeks' time (date to be confirmed). If you have any questions please call Emma 021 638805.



Childs Name: \_\_\_\_\_ School Year: \_\_\_\_\_

Room: \_\_\_\_\_ Years Playing Hockey: \_\_\_\_\_ D.O.B: \_\_\_\_\_

Parents Name(s): \_\_\_\_\_

Phone Home: \_\_\_\_\_ Cell Phone: \_\_\_\_\_

Email: \_\_\_\_\_

I am interested in coaching YES / NO.

.....✂.....